

BORLAND CENTER

IN SECTION 1, TOWNSHIP 42 SOUTH, RANGE 42 EAST
 CITY OF PALM BEACH GARDENS, PALM BEACH COUNTY, FLORIDA
 NOVEMBER 2004 SHEET 5 OF 8 SHEETS

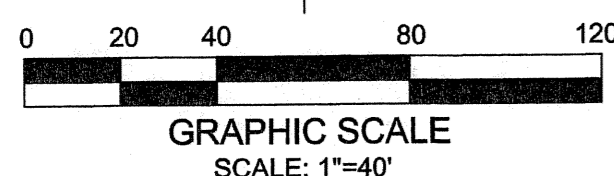
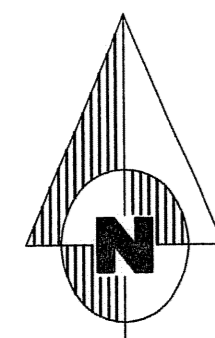
114

STATE OF FLORIDA)
 COUNTY OF PALM BEACH) SS

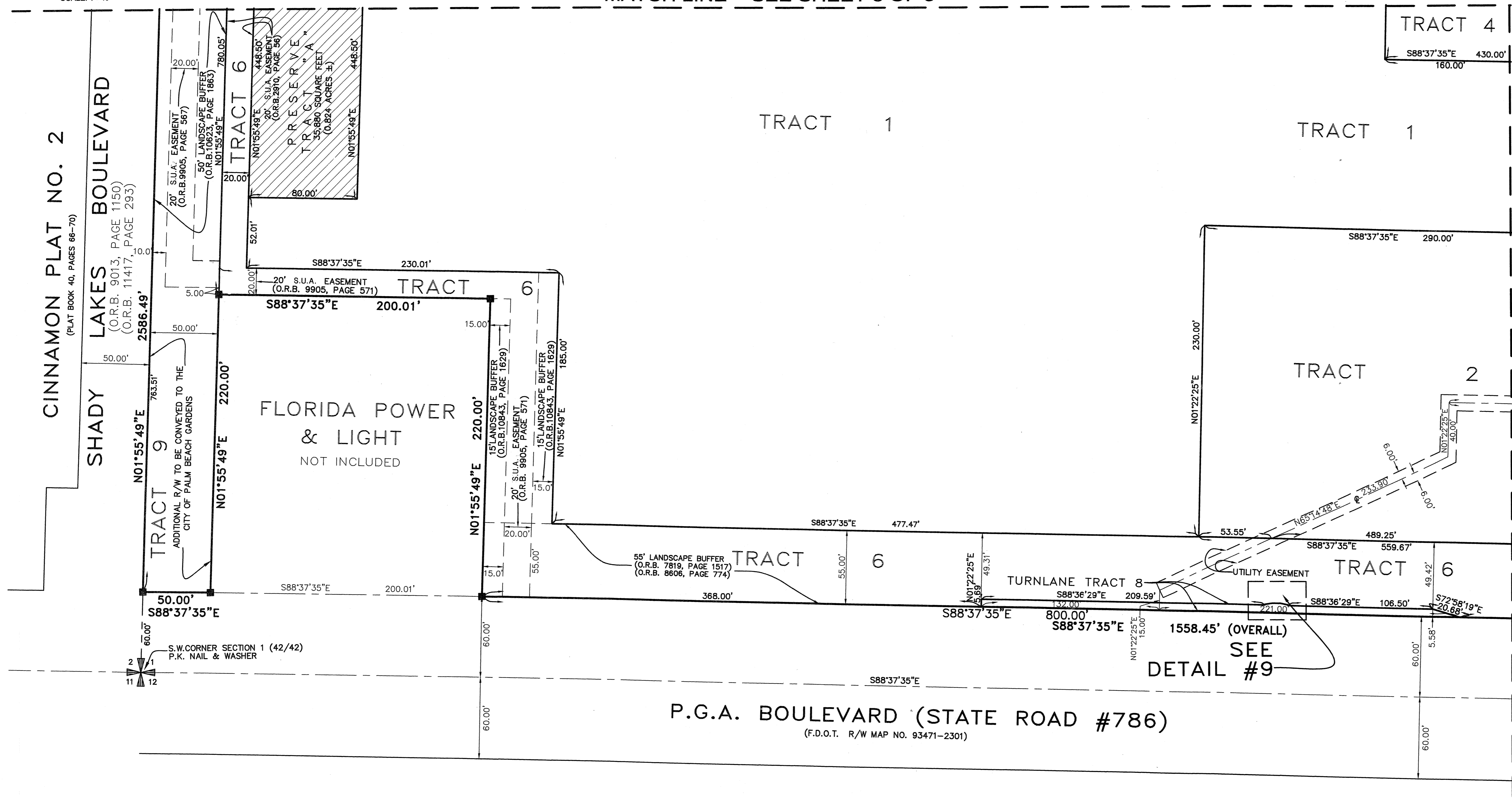
THIS PLAT WAS FILED FOR
 RECORD AT _____
 THIS _____ DAY OF _____
 A.D., 2004 AND
 DULY RECORDED IN PLAT BOOK
 _____ AND

DOROTHY H. WILKEN, CLERK
 CIRCUIT COURT

BY: _____ DC



MATCH LINE - SEE SHEET 3 OF 8



MATCH LINE - SEE SHEET 6 OF 8

Dailey-Fotorny, inc.
 land surveyors - planners
 5050 10th Avenue North Suite B - Lake Worth FL 33463-2062
 Phone: 561-965-8787 Fax: 561-965-8963